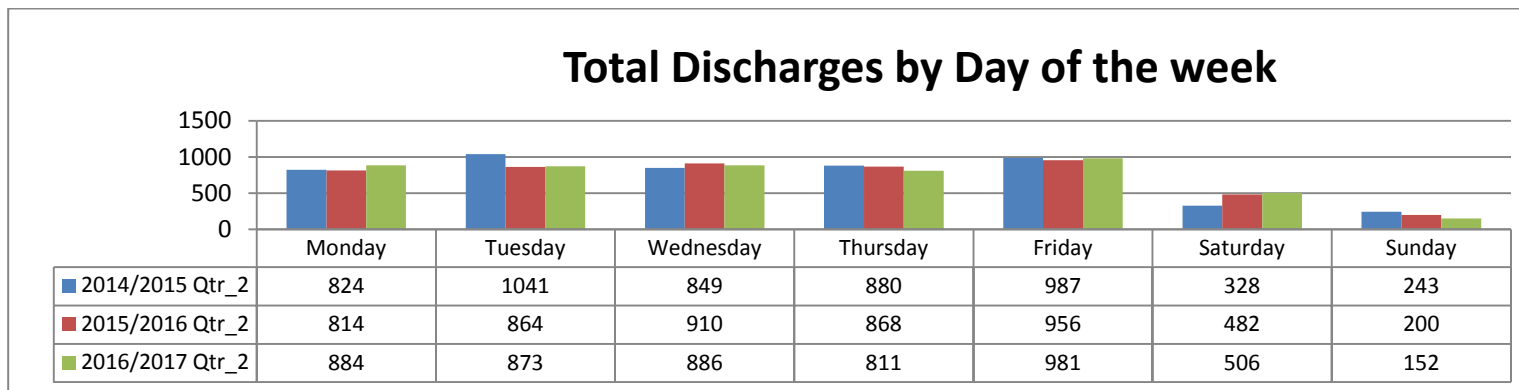
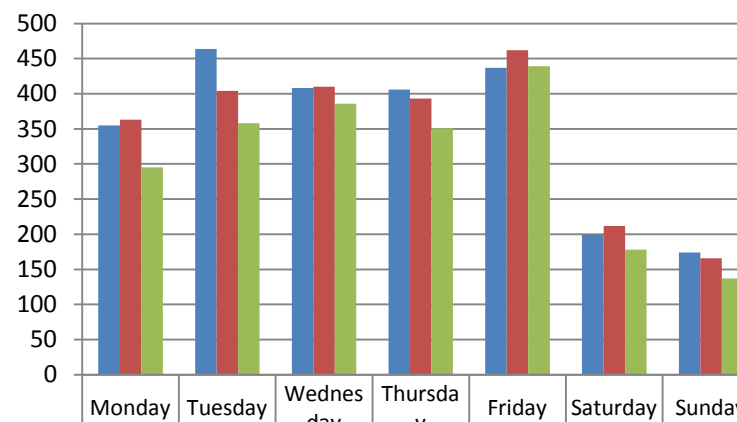
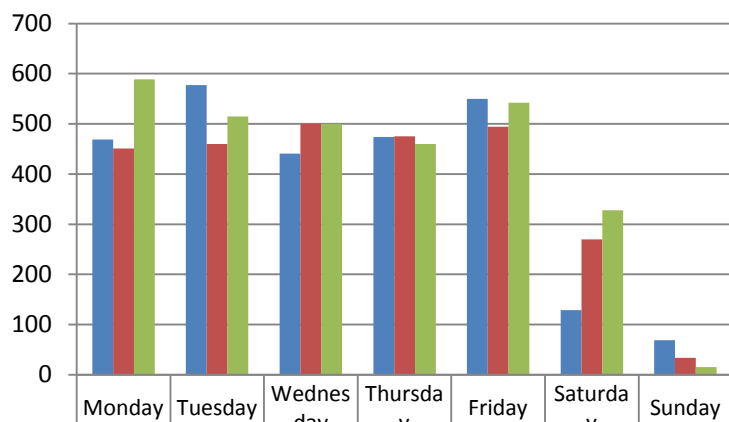


Total Discharges by Day of the Week July - September 2014/15 to 2016/17



Discharges following Planned Admissions

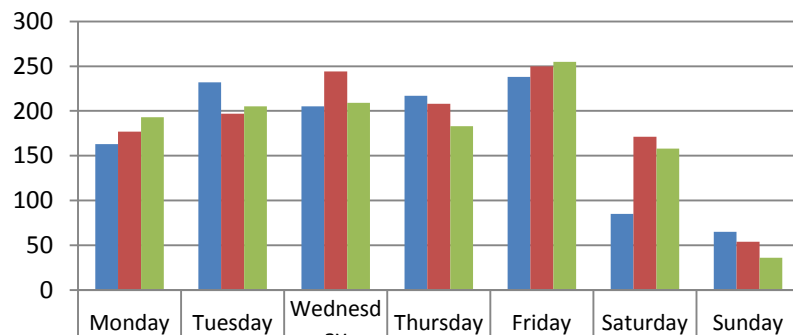
Discharges Following Unplanned Admissions



Discharges Taking Place before Midday July - September 2014/15 to 2016/17

Number of Patients Discharged Before Midday

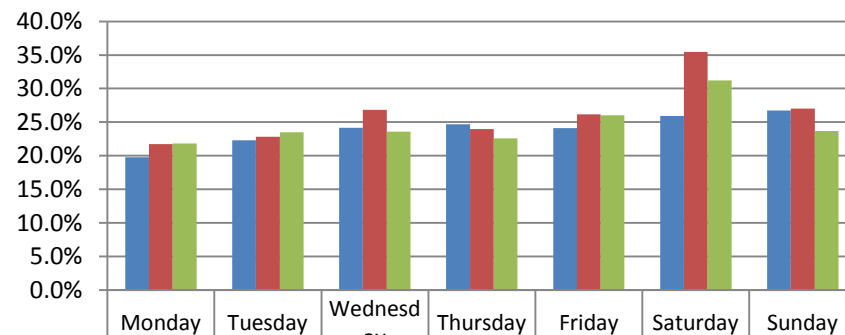
Total Pts discharged by Noon



2014/2015 Qtr_2	163	232	205	217	238	85	65
2015/2016 Qtr_2	177	197	244	208	250	171	54
2016/2017 Qtr_2	193	205	209	183	255	158	36

% of Patients Discharged Before Midday

% Pts discharged by Noon



2014/2015 Qtr_2	19.8%	22.3%	24.1%	24.7%	24.1%	25.9%	26.7%
2015/2016 Qtr_2	21.7%	22.8%	26.8%	24.0%	26.2%	35.5%	27.0%
2016/2017 Qtr_2	21.8%	23.5%	23.6%	22.6%	26.0%	31.2%	23.7%